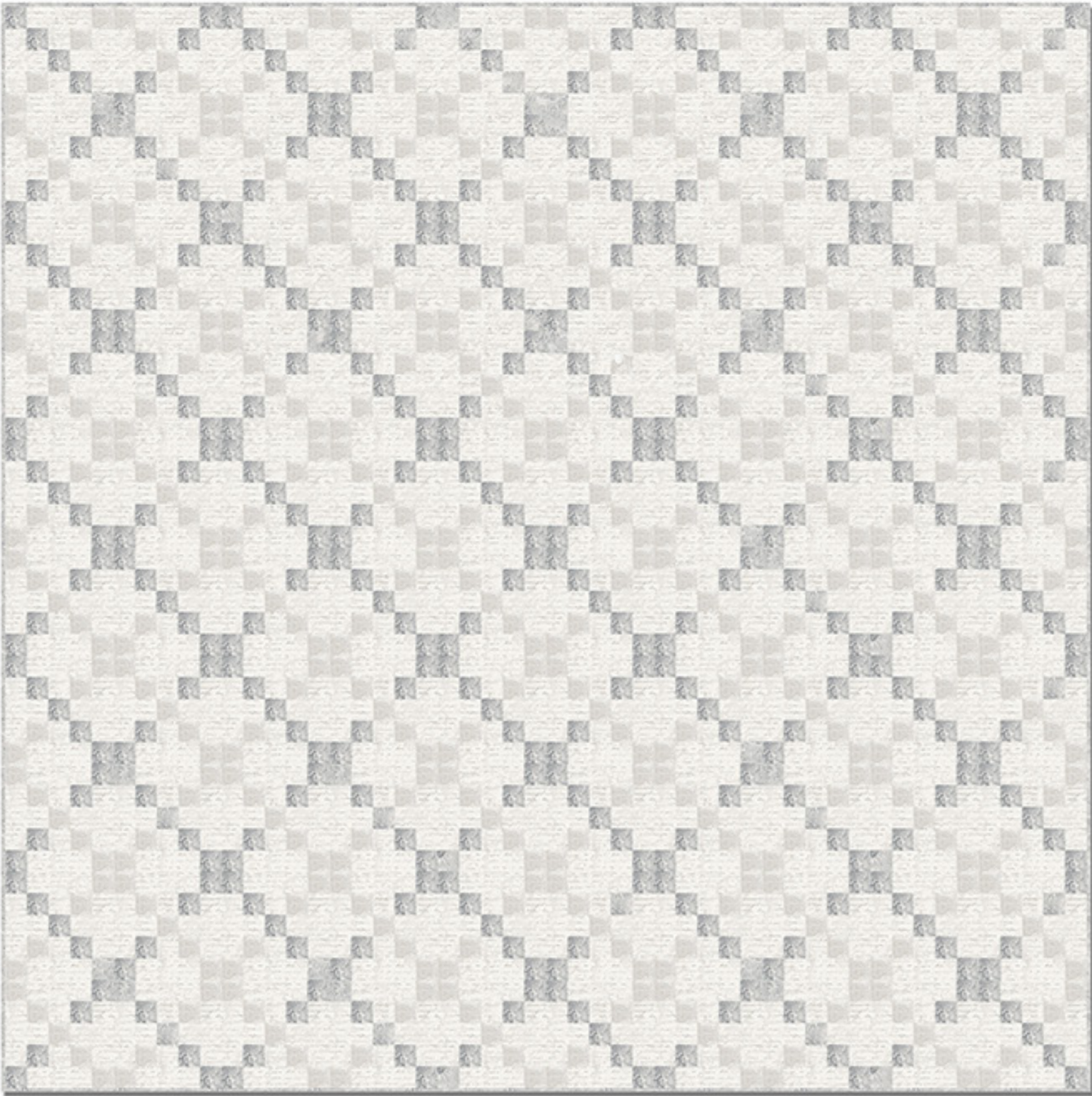


# Farmer's Chain Reaction Quilt

Designed by Farmer's Daughters Quilts



Finished Size: 100 1/2" x 100 1/2" (2.55m x 2.55m)  
Technique: Pieced  
Pattern available at [www.fdquilts.com](http://www.fdquilts.com)

Farmer's Chain Reaction Quilt Ordering Guide					
SKU		Yards	Meters	6 Kits	12 Kits
3515-90		7 1/4 yds	6.63m	3 bolts	6 bolts
3516-90		2 1/4 yds	2.06m	1 bolt	2 bolts
3522-90*		3 yds	2.74m	2 bolts	3 bolts
Backing Fabric Option					
3523-90		9 yds	8.23m	4 bolts	8 bolts
* Indicates binding fabric. FQ = 18" x 22" (0.45m x 0.55m) All fabric quantities are based on 15yd bolts unless otherwise indicated.					



Scroll 3523-90  
44" Backing Fabric Option